

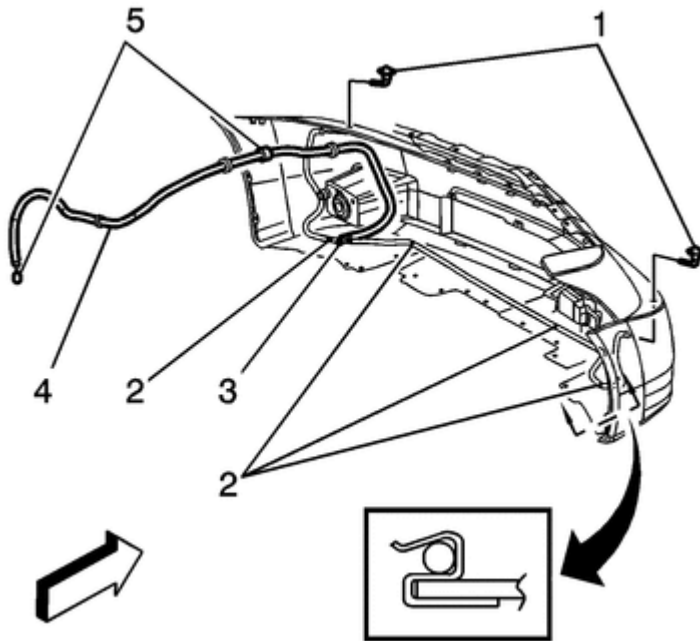
2006 Cadillac XLR : Chassis Electrical > Wipers & Washers > Removal, Installation, and Replacement > Headlamp Washer Hose Replacement

Listen

## Headlamp Washer Hose Replacement

### HEADLAMP WASHER HOSE REPLACEMENT

#### REMOVAL PROCEDURE



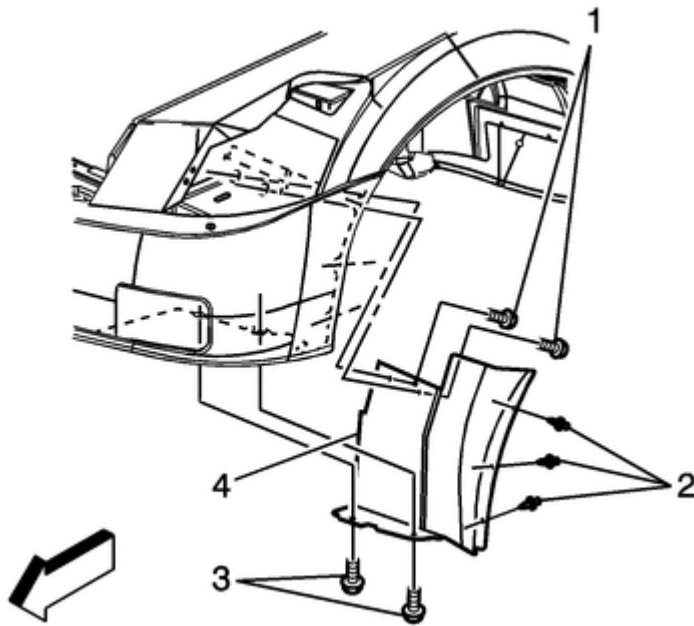
[Click to Enlarge](#)

#### **NOTE**

##### **Important**

The headlamp washer hose consists of multiple sections (4), and slide-lock connectors (5), from the pump to the headlamp washers (1). It may be necessary to work underhood, or inside the front fascia to service the Tee fitting (3), and hose clips (2). If it is necessary to access the washer solvent container hose, refer to Headlamp Washer Pump Replacement.

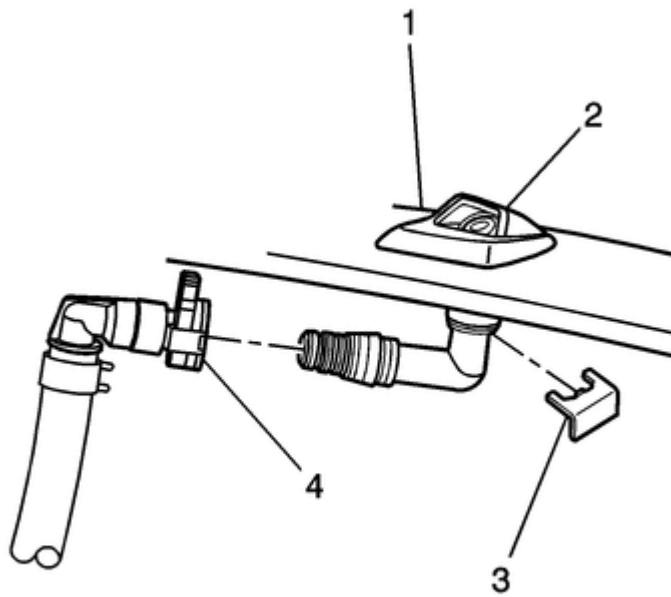
Listen



1.

Remove the forward wheelhouse fasteners (1, 2, 3) and the splash shield (4) to access the underside of the bumper cover.

[Click to Enlarge](#)



2.

[Click to Enlarge](#)

#### NOTE

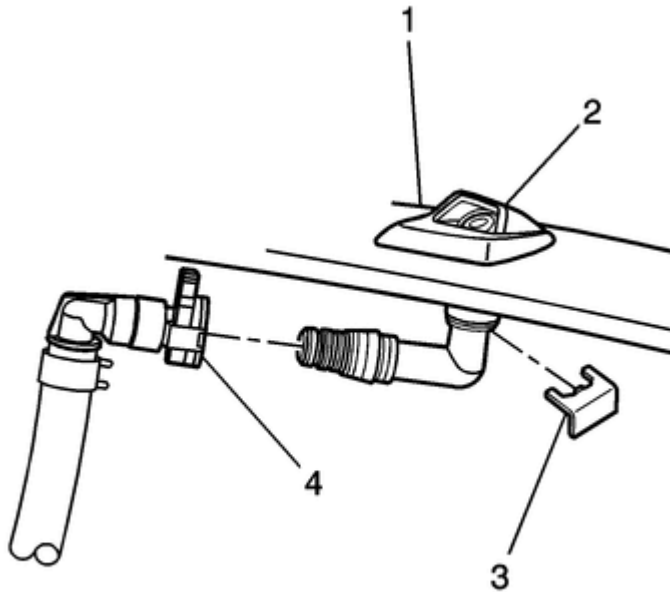
Important  
Carefully grasp both fittings of the hose and elbow, to ensure the nozzle is not cracked during removal.

Slide the hose lock connector (4) at the headlamp washer supply

hose, and disconnect the coupling.

## INSTALLATION PROCEDURE

**Listen**



1.

[Click to Enlarge](#)

### **NOTE**

Important  
Carefully grasp both fittings of the hose and elbow, to ensure the nozzle is not cracked during installation.

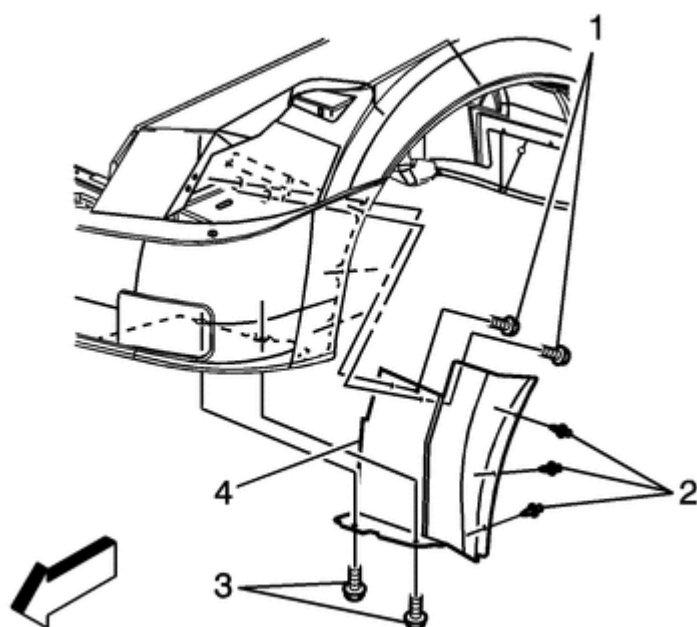
Connect the headlamp washer supply hose to the headlamp washer.  
Slide the lock connector (4) to the closed position.

2. Verify the operation of the washer. Inspect the washer for leaks.

3.

### **NOTE**

Notice  
Refer to Fastener Notice | Fastener Notice.

**Listen**[Click to Enlarge](#)

Install the wheelhouse splash shield (4) and fasteners (1, 2, 3) to the forward part of the wheelhouse.

**Tighten**

Tighten the threaded fasteners to 2 N·m (18 lb in).