

2006 - 2009 Cadillac XLR-V: Service Bulletin: #PIP4493: SES Light due to DTCs P0171 and/or P0174 - Inspect Air Cleaner Outlet Duct and Supercharger Inlet Duct Clamps

#PIP4493: SES Light due to DTCs P0171 and/or P0174 - Inspect Air Cleaner Outlet Duct and Supercharger Inlet Duct Clamps - (Oct 3, 2008)

Subject: SES Light due to DTCs P0171 and/or P0174 - Inspect Air
Duct and Supercharger Inlet Duct Clamps

Models: 2006 - 2009 Cadillac STS-V, XLR-V
with 4.4L Supercharged V8 Engine (RPO LC3)

The following diagnosis might be helpful if the vehicle exhibits the symptom(s) described in this PI.

Condition/Concern:

A SES light may be experienced as a result of DTCs P0171 and/or P0174 stored. This may be the result of unmetered air entering the engine through the air cleaner outlet duct or supercharger inlet duct connections due to a mis-assembled connection or loose clamps.

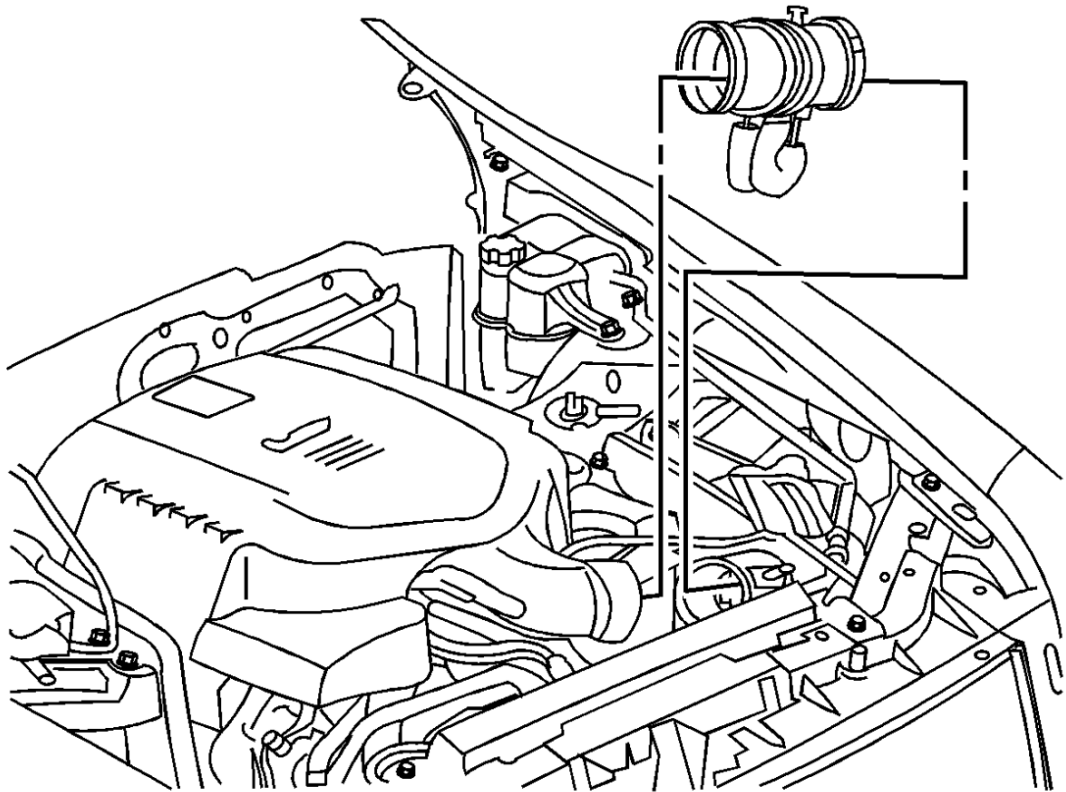
Recommendation/Instructions:

If the SI diagnostics do not isolate a cause for this concern, carefully inspect the air intake duct from the air cleaner box to the supercharger

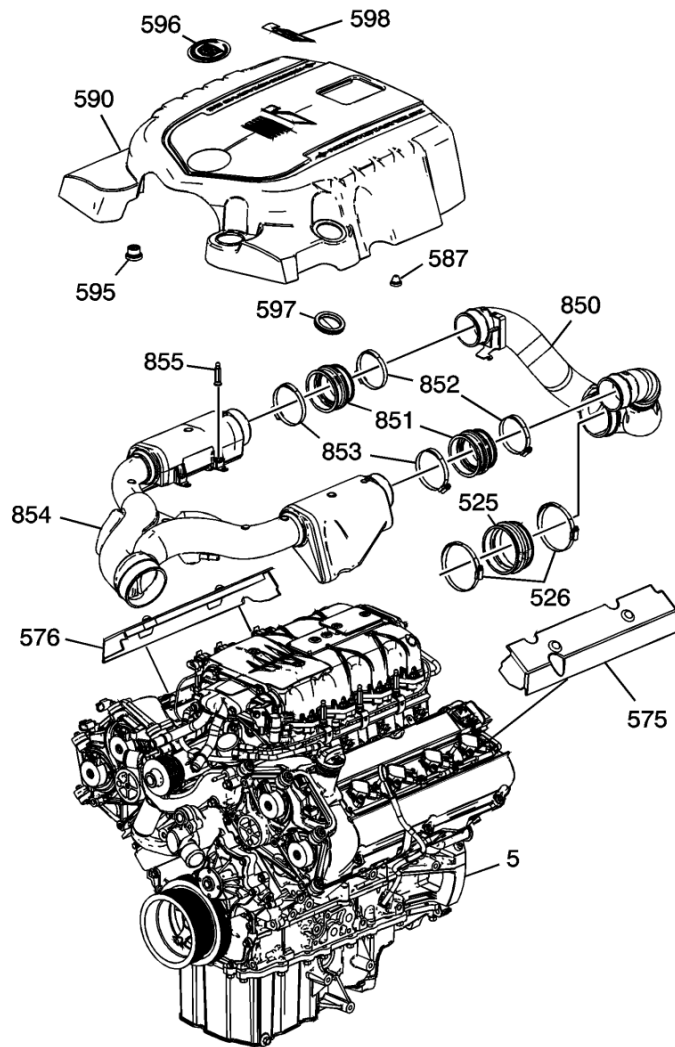
inlet duct, and the front and rear supercharger inlet ducts for mis-assembled connections and correct them as necessary. Also, perform the suggestions below for the model you are working on, and re-evaluate the concern:

For STS-V:

- 1) Tighten the air cleaner outlet duct clamps to 3 NM (27 lb-in).

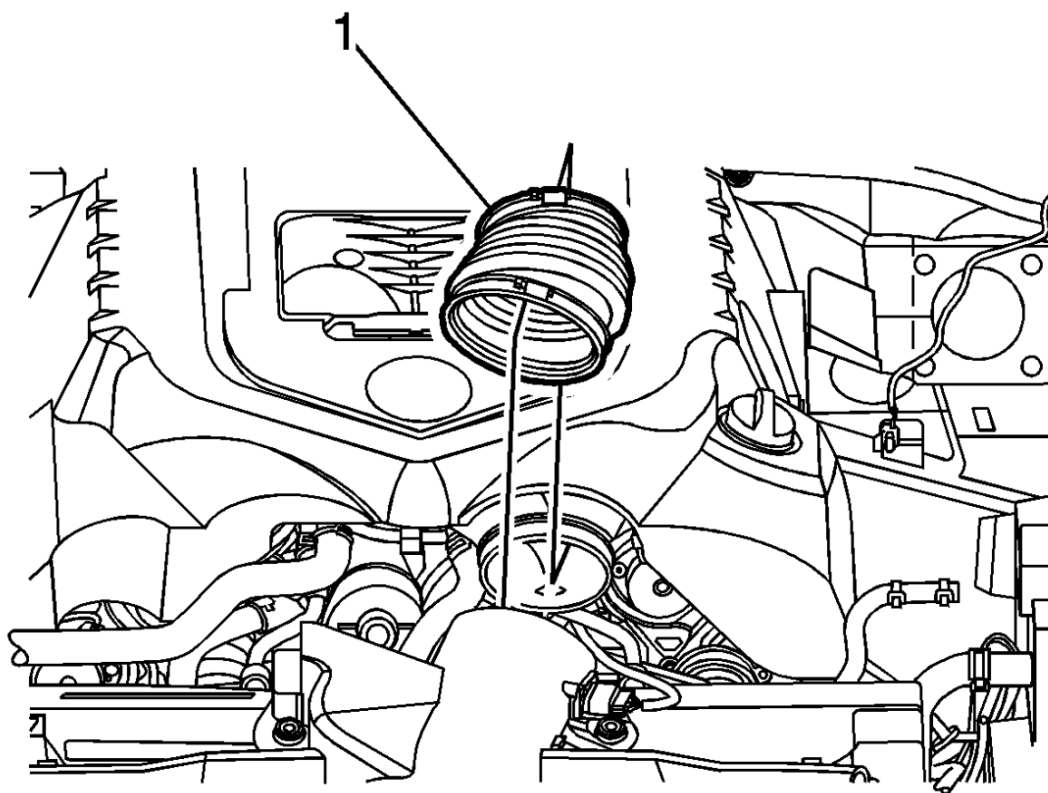


- 2) Tighten the 526, 852, and 853 supercharger inlet duct clamps to 2.5 NM (20 lb-in).

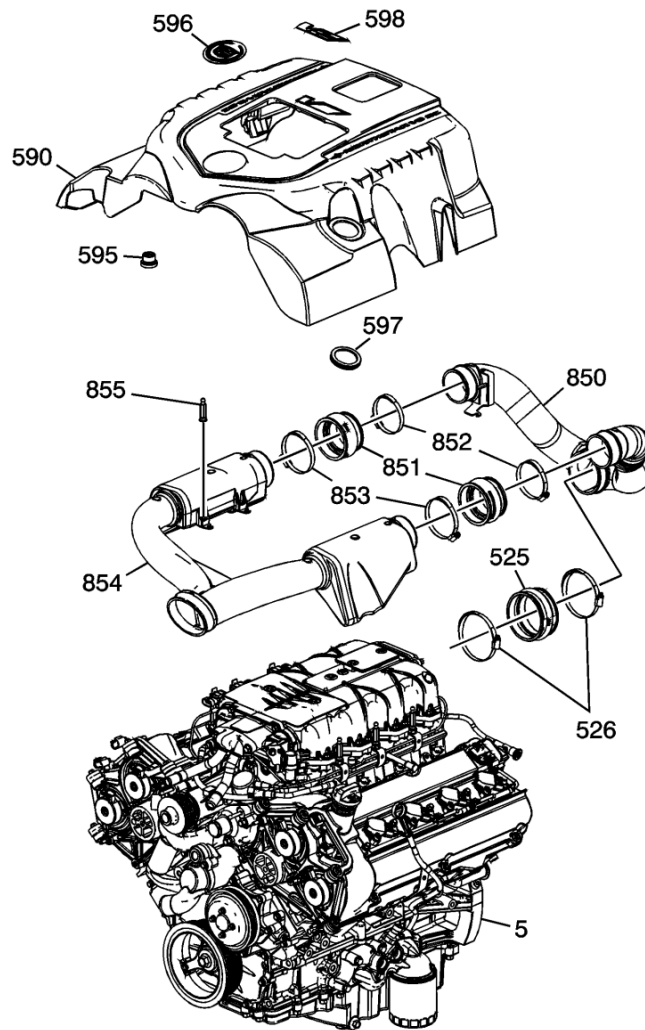


For XLR-V:

- 1) Tighten the air cleaner outlet duct clamps to 3 NM (27 lb-in).



2) Tighten the 526, 852, and 853 supercharger inlet duct clamps to 2.5 NM (20 lb-in).



Please follow this diagnostic or repair process thoroughly and complete each step. If the condition exhibited is resolved without completing every step, the remaining steps do not need to be performed.

Online URL:

<https://www.xlr-net.com/knowledgebase/article/2006-2009-cadillac-xlr-v-service-bulletin-pip4493-ses-light-due-to-dtcs-p0171-and-or-p0174-inspect-air-cleaner-outlet-duct-and-supercharger-inlet-duct-clamps-152.html>